

# Specifications



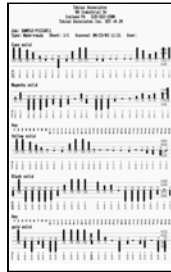
**TOBIAS**  
ASSOCIATES, INC.

**SPT**

Scanning Densitometer



Easy to read Flat Panel Monitor delivers data in text or simple bar graphs for quick setting of ink keys



QuickPrint tickets for record keeping



- Capable of reading colorbars as narrow as 1/16"(1.6mm)
- Bridge Construction allows colorbars to be in middle of sheets
- Scans colorbars in as quick as 10 seconds

**Measurement Functions –**

Density, Density Difference, Dot Gain, Trap, Contrast, Hue Error, Grayness

**Design –**

Scan Length	
SDT-20	20" (508 mm)
SDT-26	26" (660 mm)
SDT-30	30" (762 mm)
SDT-40	40" (1016 mm)
SDT-55	55" (1397 mm)
SDT-65	65" (1651 mm)
Swatches per scan	Unlimited
Measurements per swatch	Multiple
Minimum swatch size	3/16" x 1/16" (4.8 x 1.6mm)
Swatch positioning accuracy	+/-0.005"
Colors measured	4-color process, unlimited specials
Typical Scan/display time	10 seconds
Data Storage	Hard Disk, Floppy Drive
Power Requirements	115V/60Hz,7A; 230V/50Hz,3.5A
Spectral Response	Status "T", Status "E"
Languages available	English, French, German, Spanish, Portuguese

**Scanner Dimensions/Weight –**

SDT-20	38x21x8" (965x533x203mm)	30 lbs. / 14kg
SDT-26	44x21x8" (1117x533x203mm)	35 lbs. / 16kg
SDT-30	48x21x8" (1219x533x203mm)	40 lbs. / 18kg
SDT-40	58x21x8" (1473x533x203mm)	50 lbs. / 23kg
SDT-55	73x21x8" (1854x533x203mm)	80 lbs. / 36kg
SDT-65	83x21x8" (2108x533x203mm)	90 lbs. / 41kg

**Standard Accessories –**

- Built-in Ceramic Calibration Plaque
- Instruction Manual
- Tool Kit

**Optional Accessories –**

- Printer (Thermal) Tobias Hi-Speed Thermal
- Colorbars Digital Set on Disk

## Features:

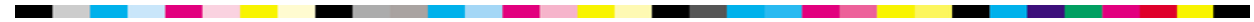
- Reads most standard colorbars as well as custom-made colorbars and gray balance bars.
- Built-in certified calibration plaque for automatic calibration to Standard T-Ref or Status "E" values
- Customer can assign ink density "target values" from either house densities or customer "OK"
- Allows for multiple unit networking capability
- Supports "closed loop operation" with most automatic press consoles
- Generates complete sets of reports for quality control departments
- Measures colorbars as narrow in height as 1/16" (1.6mm) using patented "Seek & Find" software program
- Scans colorbars in less than 10 seconds
- One SDT can serve multiple presses simultaneously
- Vacuum hold down and rugged construction, built for the pressroom

**Tobias Associates, Inc.**

50 Industrial Drive  
P.O. Box 2699  
Ivyland, PA 18974-0347 USA  
215-322-1500 (Phone)  
215-322-1504 (Fax)

[www.densitometer.com](http://www.densitometer.com)

[sales@tobiasinc.com](mailto:sales@tobiasinc.com)



### Precision Color Evaluation

There's only one sure way to manage color effectively, meet customer expectations and maximize job profitability! That is: Objective Color Measurement. In other words, *densitometry*.

Essentially this is a matter of reading a colorbar for solid ink density, dot gain, or other density-derived characteristics. However, the limited trim areas of a short cutoff press require the use of narrow 1/16" (1.6mm) bars for color control. No other device on the market can do this.

### Overview of Basic Operation

Setting up a press sheet is logical and uncomplicated. After keying in job parameters (type of press/sheet size/colorbar structure), position the colorbar between two horizontal scribelines and against the side guide. The vacuum hold-down secures sheet placement and the SDT does the rest.

A typical scan takes only 10 seconds. As the SDT scanning head travels across the press sheet, it strokes the colorbar VERTICALLY to determine bar position and skew. On the scanning head's return trip, having detected the skew of the colorbar, the head scans right down the middle of the bar for accurate densitometric readings.

### SDT Scanner

The SDT has an accurately flat, rugged platen with vacuum hold-down. The design supports the bridge and measuring probe head. Unique pass-through feature allows the entire press sheet to slide freely under the bridge, enabling scans of centrally located colorbars and bars at the bottom of the sheet.

### SDT Intelligent Analysis

Sampling a few sheets during the run provides an immediate comparison of performance to specifications. And by charting long-term trends, the SDT becomes an essential quality assurance tool.

Statistical analysis of the entire job file is performed by SPC software that comes with the system. Color-coded graphical displays show X-bar and range data for each scan. A frequency histogram generated from readings charts the distribution.

### Flexible Modular Design

The SDT Scanning Densitometer system includes all the components needed for effective color management. Its modular design allows for the convenient placement of the components according to the layout of your pressroom.

**Tobias Associates, Inc.**

50 Industrial Drive, P.O. Box 2699

Ivyland, PA 18974 USA

215-322-1500 PH / 215-322-1504 FAX

[sales@tobiasinc.com](mailto:sales@tobiasinc.com)

[www.densitometer.com](http://www.densitometer.com)