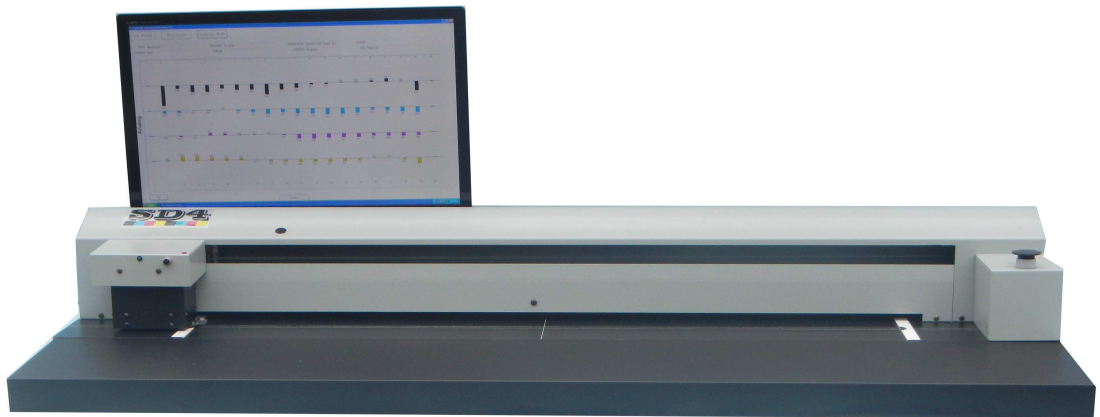


# SD4 Scanning Densitometer

## TOBIAS ASSOCIATES, INC.

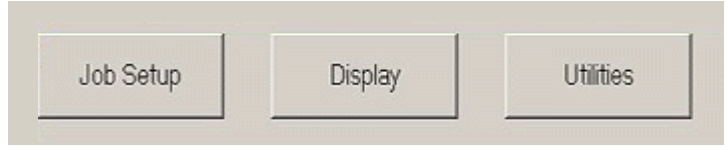


The **SD4™ Scanning Densitometer** scans press sheet colorbars to provide densitometric data for absolute quality control. In less than 8 seconds, the SD4 measures colorbars as narrow as 1/16 inch using the patented “Seek and Find”™ software program. The scanned results are displayed on a large “Touch Screen” monitor to assist the press operator with easy to comprehend visual bar graphics. The ink colors are shown as they actually appear with the actual key locations of the fountain and are referenced by key number with their tolerance conditions. The results of the scan are instantly displayed on the touchscreen monitor and can be printed using any Windows® compatible printer. Out-of-tolerance conditions are immediately flagged. With the optional CLM™ Closed-Loop Module the system

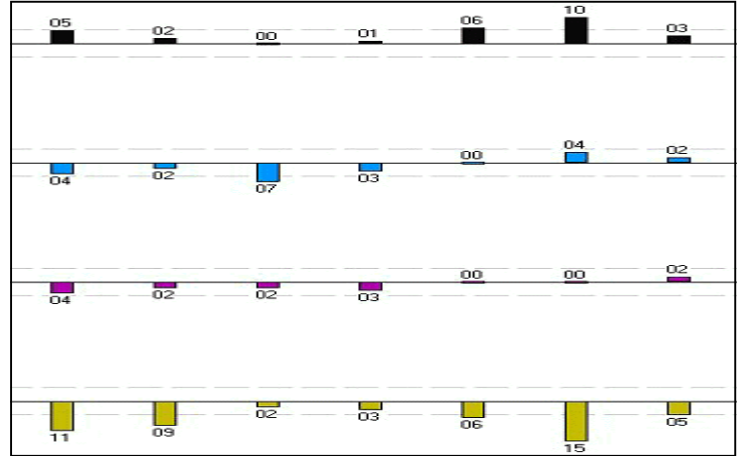
### Features

- Touch Screen operation with Windows® based software uses easy to understand icons.
- Reads most standard colorbars as well as custom-made colorbars and gray balance bars.
- Supports “closed loop operation” with most automatic press consoles.
- Measures colorbars as narrow in height as 1/16” (1.6mm) using patented “Seek & Find” software program.
- Scans most colorbars in less than 8 seconds.
- One SD4 can serve multiple presses simultaneously.
- Available in sizes up to 78 inches (1981mm).
- Out-of-tolerances key zone can be quickly corrected.
- Unique pass-through feature allows the entire press sheet to slide freely under the bridge, enabling scans of centrally located colorbars and bars at the bottom of the sheet.

The SD4 uses a touchscreen monitor that has self-explanatory icons . The Touch Screen console is made of durable materials that are strong enough to withstand the rigors of a pressroom environment. It is easy to clean and the console is not effected by spray powders or ink mists.



The SD4 can read colorbars as narrow as 1/16inch. If the swatches of the colorbar are out of pre-determined specifications it will show the deviations in a very easy to understand table and graph. The graph to the right shows the deviations from an OK sheet for easy review of out-of tolerance keys with the deviation amounts.



## Specifications

### Measurement Functions

Density, Density Difference, Dot Gain, Trap, Contrast, Hue Error, Grayness			
<b>Sizes</b>		<b>Design</b>	
SD4-30	30" (762 mm)	Typical Scan	<8 seconds
SD4-40	40" (1016 mm)	Data Storage	Hard Drive,
SD4-55	55" (1397 mm)		USB stick for external components
SD4-65	65" (1651 mm)	Power Requirements	115V/60 Hz, 3.5A
SD4-78	78" (1981 mm)		230V/50Hz, 3.5A
<b>Swatches</b>		Spectral Response	Status "T", Status "E"
Swatches per scan	Unlimited		
Measurements per swatch	Multiple		
Minimum swatch size	3/16" x 1/16"(4.8mm x 1.6mm)		
Swatch positioning accuracy	±0.005"		

### Tobias Associates, Inc.

50 Industrial Drive  
 P.O. Box 2699  
 Ivyland, PA 18974-0347 USA  
 215-322-1500 (Phone)  
 sales@tobiasinc.com (Email)  
 215-322-1504 (Fax)  
[www.densitometer.com](http://www.densitometer.com)

Product names profiled herein are trademarks of Tobias Associates, Inc. unless otherwise indicated.

Windows® is a registered trademark of Microsoft Corporation.